



Transporting Your Personal Goods

A Comprehensive Guide To Help You Get Your Personal Items Moved!

UPDATED 11/10/25

Truckload
SHIPPING

POWERED BY
RL GLOBAL LOGISTICS



Find the tips you need in this e-book so you're prepared and ready to move without any hurdles or bumps along the way from Point A to Point B.



Transporting Your Personal Goods

A Comprehensive Guide To Help

You Get Your Personal Items Moved!

You're ready to plan a move but you don't know where to begin. You have a ton of personal goods and items that need to be handled with care. We understand this is a complicated and stressful time.

A commercial B2B carrier might come up during your searches as an option for moving. However this is not a suitable choice for the moving of personal goods. B2B commercial carriers strictly operate from one business to another.

You may discover during your research that commercial carriers offer white glove services for items that need extra care and support during a move. However, white glove services for commercial carriers are usually not even offered for personal belongings.

Hiring a moving company is the best course of action for moving your personal goods. Residential moving companies offer the personnel, training, expertise, and materials needed to make your move stress free.

The good news is we're here to help with this guide tailored to your specific needs. Whether you are moving your entire house or a few delicate items that require careful handling, we have you covered below with everything from moving tips to insurance options for your goods.

This e-book has the tools you need to move your personal effects with confidence. It includes important information about moving estimates, insurance options and U.S. Department of Transportation (DOT) Federal Motor Carrier Safety Administration (FMCSA) information.

Table of Contents

Preparing to Have Your Personal Effects Transported	4
How to Move a Household	4
How to Move Appliances	5
How to Move Washers and Dryers	6
How to Move a Home Gym	7
Companies That Can Help You Move Your Personal Belongings	9
Single Item Moves: eBay and Craigslist	13
Companies That Can Help You Move Your ebay and Craigslist Items	13
How to Make Temporary Student and Situational Moves	15
Dorm Room Personal Effects	14
How to Ship Motorcycles	15
How to Ship a Couch	16
Crating Companies That Can Help You Make Temporary Moves	19
Personal Goods Tips and Checklist	20
Moving Tips for Personal Belongings	20
Moving Quotes 101	21
Things That a Moving Company Won't Do	22
Moving Quote Tips	23
What are the Types of Moving Quotes	24
Sites That Can Help You with Packaging Materials	25
Transit Insurance Details for Personal Goods	26
What Type of Items Need Insurance	26
Shipping Sculptures	28
Golf Clubs	29
Pianos	30
Limited Value Versus Full Value Protection Moving Insurance Options	31
Receiving Help with Loading and Unloading of Personal Effects	32
Hiring Loaders and Unloaders	32
What You Need to Know about Bill of Ladings (BOL) and Proof of Delivery (POL)	33
What's a Bill of Lading	33
What is a Proof of Delivery Receipt	34
What To Do if Uou Have to Report Damage	35
Tips for Inspecting Your Personal Goods After Arrival	35
Who Should Sign the Proof of Delivery	36
Conclusion	38



Preparing to Have Your Personal Effects Transported

Personal effects moving can include everything from entire household moves, eBay or Craigslist moves, or even temporarily moving items to and from college. We have the tips you need below to make all of these types of moves go as smoothly as possible.

HOW TO MOVE A HOUSEHOLD

One of the most stressful events everyone has to face at some point is moving a household full of personal items. While it can seem overwhelming, we have the tips you need to make the process manageable. For starters, make sure to:

- Make a list of everything you need to pack in each room.
- Create another list of all the packing materials you need (e.g., boxes, packing tape, wardrobe boxes).
- Find a reliable source for cardboard boxes, whether you purchase them or pick them up used from local stores.
- Make a list of items that need special handling, such as artwork and fine China. Set these aside for special packing.
- Set aside any items you no longer use. These can be sold or donated to save money and space.
- Prepare a separate box of essential items that you need on your last day in your old place and your first day at your new home.

Now that you have a blueprint on how to tackle your move, let's give you some inside info on what you need to know about packing and moving your personal belongings.

HOW TO MOVE APPLIANCES

Did you know the No. 1 issue with moving appliances from Point A to Point B is floor damage? Think about it. These are the largest and heaviest personal items you own besides your car. That's why it's important to take care of the floors first.

To prevent floor damage when moving appliances, you need to clean the floors before moving. Dirt and grime can create unwanted scratches created from the friction caused when you or the moving company employees push these heavy items across the floor. Plus, cleaner floors make it easier for the appliances to slide while moving.

If you want to be extra careful, purchase plastic floor guides to help you move appliances. You can also place carpet squares on the floor, followed by plywood on the top, to create a safe, rollable surface that gives your floors extra protection.

Are you moving appliances from a second-story or third-floor? If so, a stair-climbing cart and hand truck are your friends. These carts are designed to work on stairs for heavy appliances. Your back will thank you. You can also consider renting or buying an air sled to move your appliances with the least amount of effort necessary.

If you really want to be impressive, pick up an air sled, which once it's plugged in, works like magic to be lifted by air and mechanical genius to keep floors safe and makes you think for a split second your appliances can walk on water.

Next, let's look at some a specific appliance set for moving tips that will help you when it's time to move those large expensive items:



HOW TO MOVE WASHERS AND DRYERS

Movers are often hesitant to move washers and dryers due to their fragility in transit and ensuring liability concerns. However, there are steps you can take to reduce the risk of damaging these fragile, expensive appliances, whether you end up moving them yourself or find a willing mover.

Ensure that the washing machine is ready to move by getting a washing machine moving kit. This kit mostly consists of the bolts that secure your washer when it arrives from the store, which will ensure your washer is safe during the move.

Washers and dryers can be some of the most cumbersome household appliances to move. To simplify the process and prevent damage, follow the instructions below:

- **Make sure all water is removed from the washing machine**
- **Secure the power cords and hoses to the back of the appliances**
- **Clean and remove the dryer's lint filter and lint tube from the back of the dryer**
- **Secure the tumbler inside the washing machine with a rubber rod to immobilize the tumbler from bouncing around during a move**
- **Cover your washing machine and dryer with heavy blankets and secure them.**





HOW TO MOVE A HOME GYM

Moving your home gym can be one of the most time consuming processes of your move. For starters you need to find boxes that can hold heavy gym equipment such as plates, hand weights, and other toning equipment. Movers will charge more to move heavy items and equipment.

Here are two tips that will help you tremendously and save you time:

Treadmills Need Dollies

Use a dolly to move and transport your treadmills that are 100 pounds or heavier. Don't try to disassemble the treadmills: keep them intact.

Treat Ellipticals and Stationary Bikes Like Bicycles

Follow the above process on breaking down a regular bicycle and use it to break down the pedals and other moving parts of your elliptical machines and stationary bikes. Then safely store the parts in a box. Use plastic bags and mark your hardware so you know what goes with each piece of equipment. Use pieces of cardboard, towels, and furniture sliders like we mentioned above to protect your floors.

Now that you have a guide on how to ship household belongings, let's give you a road map to the personal belongings moving companies that can best help you with your move.





Companies That Can Help You Move Your Personal Belongings

Moving personal belongings is easy if you know the right steps and procedures to pack and get personal effects ready for shipping.

There are many nationwide personal shipping companies that can help you ship your personal belongings to any destination in the US. While USA Truckload Shipping doesn't handle hauling personal belongings from Point A to Point B, we have compiled a list of the most reputable national companies that can help you move your household items.

Before choosing any of the companies listed below, we strongly encourage that you thoroughly research and review their qualifications.

YouCrate

877-558-2580

<https://youcrate.com/>

Get a Quote: <https://youcrate.com/RateQuote.aspx>

Mayflower Transit

888-368-4689

<https://www.mayflower.com/>

Get a Quote: <https://www.mayflower.com/get-a-quote>

United Van Lines

877-368-9797

<https://www.unitedvanlines.com/>

Get a Quote: <https://www.unitedvanlines.com/get-a-quote>

Atlas Van Lines

800-638-9797

<https://www.atlasvanlines.com/>

Get a Quote: <https://www.atlasvanlines.com/moving-quote>

North American Moving Services

800-228-3092

<https://www.northamerican.com/>

Get a Quote: <https://www.northamerican.com/free-quote>

Bekins

866-799-9468

<https://www.bekins.com/>

Get a Quote: <https://www.bekins.com/moving-estimate/>

Wheaton Worldwide Moving

866-798-5070

<https://www.wheatonworldwide.com/>

Get a Quote: <https://www.wheatonworldwide.com/moving-estimate/>

North American Relocation

800-213-4910

<https://www.northamerican.com/corporate-relocation/services>

Get a Quote: <https://www.northamerican.com/corporate-relocation/contact-us>

Corrigan Moving Systems

800-267-7442

[Corriganmoving.com](https://www.corriganmoving.com)

Get a Quote: <https://www.corriganmoving.com/contact-us/>

American Red Ball Transit Company

800-733-8139

<http://www.redball.com/>

Get a Quote: <https://redball.com/schedule/>



Coleman Worldwide Moving

877-693-7060

<https://www.colemanallied.com/>

Get a Quote: <https://www.colemanallied.com/offers/free-quote/>

Palmer Moving & Storage

586-834-3400

<https://www.palmermoving.com/>

Get a Quote: <https://app.priceguide.ai/estimator/recBNgE0f4stCSbaQ>

Berger Transfer & Storage

866-969-5040

<https://www.bergerallied.com/>

Get a Quote: <https://www.bergerallied.com/quote-request/>

Beltmann Relocation Group

866-252-2383

<https://www.beltmann.com/>

Covan Worldwide Moving Inc.

800-239-7700

<https://www.covan.com/>

Get a Quote: <https://www.covan.com/residential-movers/>



Armstrong Relocation

800-288-7396

<https://www.goarmstrong.com/get-moving-with-armstrong/>

ABF U-Pack

844-362-5302

<https://www.upack.com/>

Get a Quote: <https://www.upack.com/moving-services/long-distance-moving/cross-country>

AMJ Campbell

888-265--6683

<https://amjcampbell.com/en/home>

Get a Quote: <https://amjcampbell.com/en/quote>





Single Item Moves: eBay and Craigslist

Now that you have everything you need to move an entire household full of personal belongings, the next step in our comprehensive guide is helping you move individual items safely and easily.

Keep in mind that smaller haulers can help with these types of moves, but in many instances they do not handle the packaging for you. Read on to find some must-have information for finding assistance moving these large, individual items.

FIND SPECIALTY MOVERS FOR CRAIGSLIST ITEMS

Some Craigslist items are just too bulky and difficult to move alone without help, whether they need to be shipped locally or long distance.

Use the tips we offered above for packaging items correctly. Once that's done, it may be time for you to look into assistance with transporting the item(s) from point A to point B.

Companies That Can Help You Move eBay and Craigslist Items

Moving personal eBay and Craigslist items can be done correctly if you follow the advice provided in our comprehensive guide. We have compiled a list of the most reputable smaller haul companies that can help you move your eBay and Craigslist items.

Before choosing any of the companies listed below, we strongly encourage that you thoroughly research and **review their qualifications.**

Companies you might consider working with when moving eBay and Craigslist items include:

Uship.com

800-698-7447

<https://www.uship.com/>

Get a Quote: <https://www.uship.com/ship/>

Cargomatic

866-513-2343

<https://cargomatic.com/>

Get a Quote: <https://cargomatic.com/learn-more/>

Convoy

206-971-1237

<https://convoy.com/shippers/>

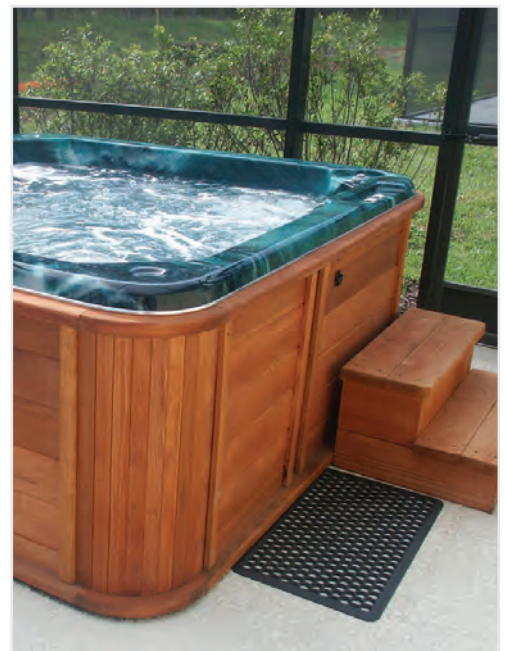
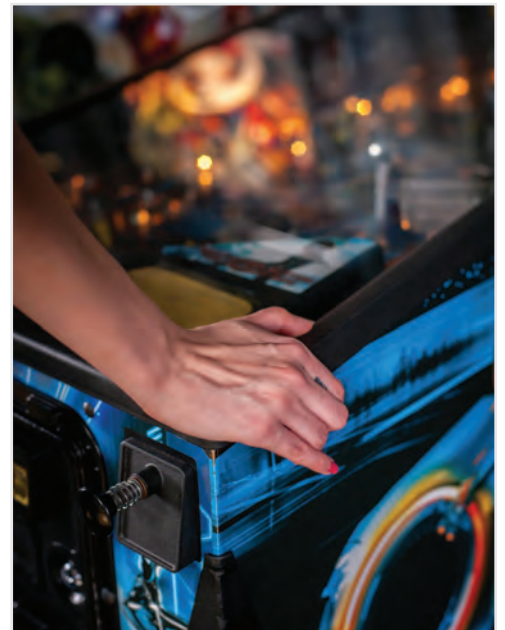
Get a Quote: <https://convoy.com/shippers/>

Roadie

844-476-2343

<https://www.roadie.com/>

Get a Quote: <https://www.roadie.com/solutions/big-bulky-delivery>



How to Make Temporary Student and Situational Moves

Whether it's your first college dorm or an extended stay in an area away from home, temporary moves can be handled with ease with the right preparation. We have some tips on how to pack and ship individual items for these temporary moves below.

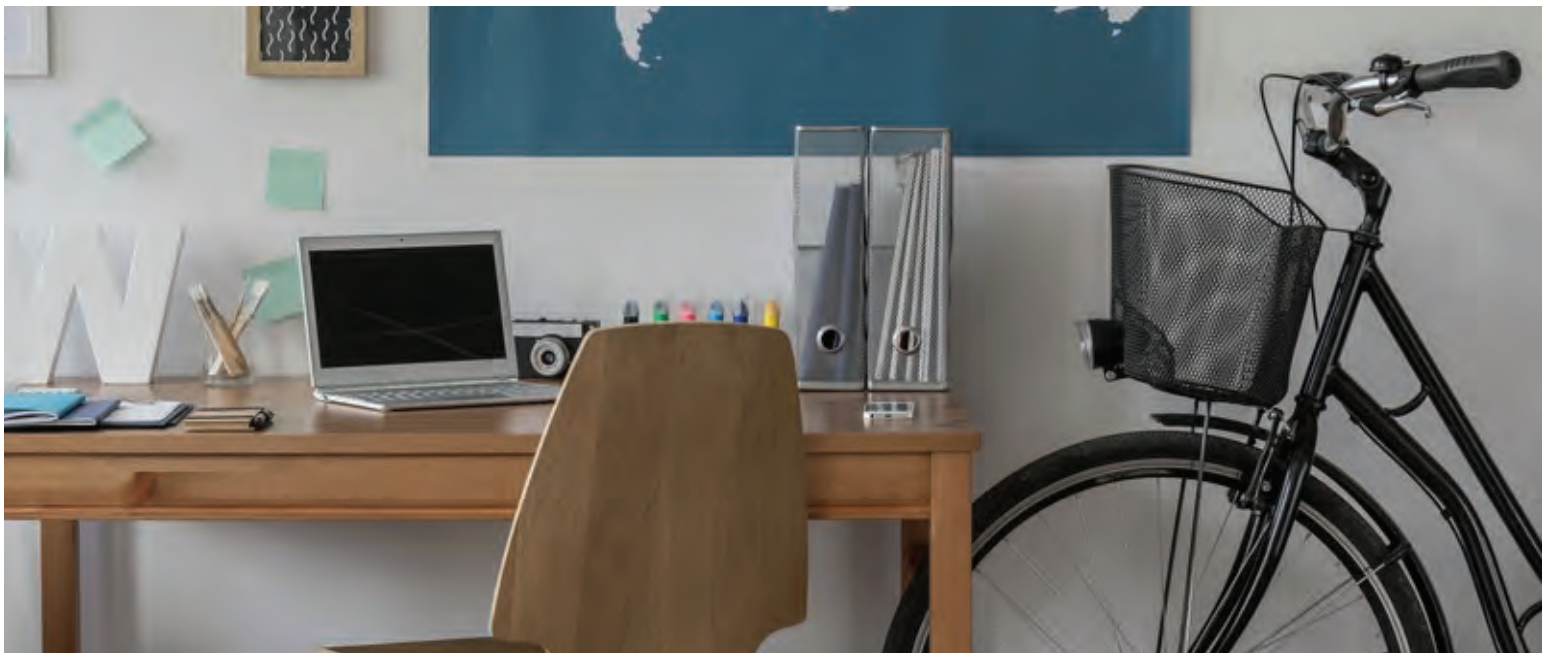
DORM ROOM PERSONAL EFFECTS

You will probably want your TV, microwave, and your computer in your dorm. Maybe you'll even want your bicycle to get around campus, or a small refrigerator of your own. All of these items need special care when you pack for college. Be sure once you have checked them off your list you pack them individually in their own boxes, and mark them breakable.

How to Ship a Bike

Here's a quick guide to disassembling your bike properly to fit it into a bike box that works and protects your bicycle:

- Disassemble and wrap your bike's frame and fork
- Remove the handlebars and shifting levers and place them in protective foam
- Remove and wrap up the seat, seat post, and pedals
- Remove the caliper mounts



- Remove the front wheel of the bike and secure it with padding
- Leave the back wheel attached with the chain in place
- Keep the disc brakes separated
- Use bubble wrap and zip ties to secure everything before you place bicycle parts in the box

Alternatively, there are several hitch-mounted and bed-mounted bike carriers available for vehicles of all sizes. These make hauling your bike a cinch with no disassembly required (except for removal of the front wheel on certain carrier models).

HOW TO SHIP MOTORCYCLES

When choosing a shipper for your motorcycle, you will first need to decide which type of trailer you prefer for transport. You have the option of enclosed or open trailers, and you will want to confirm that your shipper has what you are looking for.

Choose an open motorcycle transport trailer if:

- **Shipping a short distance**
- Your trip will take less than one day
- **The vehicle will be properly prepared to endure rain and other inclement weather conditions**

Choose an enclosed transport trailer if:

- You are shipping the bike over a long distance which will span the course of several days
- **The motorcycle is particularly valuable or has aftermarket modifications**
- **There's any chance of severe rain, snow, hail, and other damaging weather**





There is a fair amount of work that can go into shipping a motorcycle, but taking the time to complete the necessary steps will protect the vehicle during the shipping process.

- **Thoroughly clean motorcycle**
- Remove any items from storage compartments
- Remove saddlebags
- Note any chips, dings, scratches or other cosmetic damages
- **Insure that tires are properly inflated**
- **Some drivers will require a motorcycle be drained of all fluids and battery removed**

HOW TO SHIP A COUCH

Read on to find the tools you'll never forget for moving couches and other bulky pieces of furniture. These are mover tips taken from professionals.

Don't Panic, Measure

First, use measuring tape to measure the width and height of the sofa (the back of the couch when you're sitting on it). Then measure the doorway dimensions. The same directions apply if you're moving the couch into a stairway or elevator.

Do the Math

It's best to hire a professional shipper that will arrive and help you to pick up your couch and get it inside.

Remove the couch's cushions followed by its legs (assuming the legs are removeable). Then place cardboard down on the floor to make the sliding easier. With these steps complete, follow these tips to get through the door.

If the couch's height is longer than the door's width, then the couch's width will need to be narrower than the doorway's width. Now you can turn the couch so its back is facing the ceiling. The couch should slide right through the doorway now.

If both the width and the height of the couch is too long for the width of the door, things get tricky. Measure the length of the couch and the height of the door opening. The couch's length needs to be shorter than the height of the door. Take the front door off its hinges if you need the extra room.

Now stand the couch on one end with the bottom of the couch poised to enter the doorway first. Then angle the couch so the back and the bottom of it form a V. With a helper on the inside steering the couch as it comes through the door, angle the couch by sliding the seat through the door, letting the couch angle around the doorway. Your helper may need to tilt the couch as you slide it through the door.



Crating Companies That Can Help You Make Temporary Moves

Making temporary student moves and other situational moves can be made easier if you select a crating company that allows you the flexibility to receive a crate and pack it with your personal items at your convenience. Here is a list of the most reputable crating companies that can help you with your temporary moving needs.

Before choosing any of the companies listed below, we strongly encourage that you **thoroughly research and review their qualifications.**

Companies you might consider working with when making temporary moves include:

PODS

855-706-4758

<https://www.pods.com/>

Get a Quote: <https://www.pods.com/moving-services/long-distance-moving>

U-Pack

844-362-5303

<https://www.upack.com/>

UBox Containers

855-955-2598

<https://www.uhaul.com/UBox/>

Get a Quote: <https://www.uhaul.com/UBox/DeliveryMethods/>

SmartBox Portable Moving & Storage

800-705-7431

<https://www.smartboxmovingandstorage.com/>

Get a Quote: <https://www.smartboxmovingandstorage.com/free-quote>

1-800 Pack Rat

800-PACK-RAT

<https://www.1800packrat.com/>

Get a Quote: <https://www.1800packrat.com/containers>

Personal Goods Tips and Checklist

We have the personal goods tips and checklist items you need to plan ahead for your move.

MOVING TIPS FOR PERSONAL BELONGINGS

Making sure your personal goods arrive in the same condition in which they left the most important part of the moving process. In this section, we'll go over some more damage prevention tips and what to do should your personal belongings get banged up in transit.

Know the Rules Regarding Damages

If you're working with a moving company, it's important to understand their damage policies and what, if any, insurance they provide for their services. Here are a few key questions to ask to ensure you both are on the same page when it comes to damage liability:

- If something happens to my furniture, what is your company's policy on how I will be compensated for these damages?
- How does your insurance cover the property, the shipper, the carrier, and the receiver?
- What can I do to prepare the furniture and reduce the possibility of damage?





Understand the Delivery Terms

If you hire a full-service moving company, you may have professional movers not only placing your furniture where you want it in the living room, but also unpacking boxes for you. Similarly, white glove service providers combine over the road freight services with more detailed pickup and delivery services such as two or three person crews, assembly, and moving goods into your room of choice.

MOVING QUOTES 101

You should know that the quotes you receive for moving your personal goods include many factors. These include:

- Insurance on items
- Fuel cost
- Length of trip
- Time in transit
- Size of domicile
- Packing materials
- Number of floors/levels movers will have to move up and down
- Shuttle service (If a large moving truck can't fit through your residential street, other arrangements of smaller vehicles need to be arranged)
- Long haul fees are assessed for extra long walks to the truck from the house
- Packing and gratuity services
- Accessorial charges such as overnight storage



THINGS THAT A MOVING COMPANY WON'T DO

Believe it or not, moving companies won't do everything for you. We already showed you one trick above about how to secure your washing machine tumbler since many movers are hesitant to haul this appliance. Moving companies also will **NOT**:

- **Take Down a Chandelier:** Hire a licensed electrician that has experience in installing and taking down chandeliers.
- **Uninstall Satellite Dishes:** Your satellite company will most likely handle this for you, but it's best to double check before leaving your current residence.
- **Perishable Items:** These goods can be hauled in your own vehicle.
- **Move Specialty Items Such as Pricy Art and Baby Grand Pianos:** These are liabilities most general moving companies are too afraid to touch. You'll have to find a **specialty white glove service**, and the instrument will likely need to be tuned after being moved.
- **Guns:** Pack them up safely in gun safes and take them with you. Be prepared to show permits for the guns if you get pulled over along the way. If you're not willing to move your own guns, you might be able to find a gunsmith that has enough insurance to move your gun collection.

MOVING QUOTE TIPS

There are some things you need to know about moving quotes that you're not going to find anywhere else. Follow these guidelines to protect yourself and your personal belongings:

Do not sign any blank documents or estimates. Use a different company if they try to force you to sign anything that they promise to fill in later.

Choose companies that base their estimate on weight. It's easier to overcharge on gross volume, but the weight scales never lie for accurate quotes.

The most accurate quotes always come from movers that send someone for a walk-through of your home.

U.S. Department of Transportation (DOT) Federal Motor Carrier Safety Administration rules and regulations require movers to base the estimate on a physical evaluation of your home, unless you waive this requirement.

Request an accurate inventory list as part of your quote so you can make sure everything is accounted for in the quote.



WHAT ARE THE TYPES OF MOVING QUOTES?

Binding Moving Estimates

A binding estimate is a moving quote a moving company guarantees to honor as long as nothing else changes on the moving inventory sheet.

Non-Binding Moving Estimate

A non-binding moving estimate is basically a best guess of your moving cost. Your price isn't nailed down yet and it won't be until the final weight of your shipment and services are rendered.

Binding Not-to-Exceed Moving Estimate

This is the same as a binding estimate, but you will end up paying less than the estimate if the items moved weigh less than the original estimate.





Sites That Can Help You with Packaging Materials

Here is a list of the most reputable packaging and materials companies that can help you with your personal goods packaging needs.

Before purchasing packing materials from any of the company URLs listed below, we recommend that you thoroughly research and review their qualifications.

Companies you might consider working with when looking for packaging materials include:

YouCrate

<https://youcrate.com/>

Bring Me Boxes

<https://bringmeboxes.com/>

ULine

https://www.uline.com/cls_moving

UsedCardBoardBoxes.com

<https://www.usedcardboardboxes.com/>

PackagingSupplies.com

<https://www.packagingsupplies.com/>

UHaul Moving Supplies

<https://www.uhaul.com/MovingSupplies/>



Transit Insurance Details for Personal Goods

Know your options before you select a moving insurance provider. We have you covered with the insurance information you need below.

WHAT TYPE OF ITEMS NEED INSURANCE?

Ideally, all of your personal goods should be covered with one of the insurance options mentioned above. However, there are some specialty items which demand as much insurance as you can reasonably afford during a move. These items include:

Antiques, Sculptures and Artwork

Shipping antiques, sculptures and artwork can be challenging. Valuable and collectible items have high monetary worth and require extra attention to detail during the shipping process. With moving something of value, it's important to take the right steps to ensure the item is not damaged, destroyed, or stolen.

Following these tips will help ensure a successful shipment of these items.

Identify the Antique

It's important to know the specifics of the antique being shipped. Is this a small or large item? Small antiques include jewelry, coins, or memorabilia. Larger antiques include automobiles, furniture, and artwork. Consider getting a professional appraisal on the antique to ensure correct valuation.



Insure the Antique

There are a variety of insurance plans including owners insurance, dealers insurance, and automobile insurance. Your homeowner's insurance agency might even be able to draft a separate insurance policy for antiques. You should also consider going through a separate insurance company that deals specifically with antiques and people who work with them on a daily basis.

Package the Antique

The most important thing to remember when packaging an antique is the item is highly valuable. Small items require extra attention to detail because they can easily be lost or broken. They should be shipped in a durable carton box using packing materials such as bubble wrap or Styrofoam peanuts for protection.

Large items must be secure before the shipping process. Different parts of an antique, such as handles and doorknobs, are often valuable on their own. It's important to make sure the entire antique piece is secure. Following these steps will help ensure a successful shipment of an antique.



SHIPPING SCULPTURES

The crate you use and the way it is packed sets the tone for your work during transport. The condition report, contact information and inventory report (if more than one item is being shipped), should be placed inside along with the sculpture. The shipping label should contain your contact information such as; address, name, phone number and email address.

Make sure to add proper unpacking techniques for the new owner to prevent damage when unpacking the sculpture.

Plan Ahead and Give Plenty of Time to Ship Sculptures

If you are having a custom crate built for your sculpture, plan ahead at least eight weeks. Also make sure that the driver has a way to securely lift the packaged sculpture onto the truck. This information will make the shipping process easier for you and the driver and aid in getting an accurate price.

How to Insure Your Artwork for Shipping

Gallery owners are the first ones to tell you they've seen more than their fair share of damaged artwork arrive at their galleries. Not every piece arrives safely. Sometimes, despite everyone's best packing effort, artwork still manages to get damaged in transit. It's best to cover your future shipment through insurance that can be provided through the shipper or an insurance company.

Your new artwork may be covered through your home or personal property insurance too, so double check before you buy additional insurance.

GOLF CLUBS

Expensive and easily bent, golf clubs require some special attention during a move.

Strength in Numbers

Group all the clubs close together. Place them into one section of the bag if possible. Try throwing a sock or large cover over the irons and putter to prevent scratching and to minimize movement in transit

The tallest clubs should be placed in the middle of all the other clubs and packed and insulated as much as possible to prevent breakage.

Time to Cover Up

Place your rain hood over the whole top portion of the golf clubs. This will prevent water from getting into the bag and ruining the golf clubs and bag. Once this is done you should place your whole golf bag into your golf travel bag. If you do not have one a tall box can also work. Be sure to pack the bag or box tightly so nothing shifts around during transport. You can use towels or other things you may be taking on your golf outing.

Other Packing Options

Bubble wrap and tape make a great compacted surface for your golf clubs. You can unscrew the heads of your golf clubs off and pack them separately if they come apart. One more option to reinforce the top part of your bag where the heads are is to use a broom on a stick. This lays a protective wedge between the gloves and ground for extra support.



PIANOS

A piano can be a family heirloom, a gift or an individual's trade and is considered a valuable possession that can be exceedingly expensive. They can cost anywhere from a couple hundred dollars to almost a half million dollars. Heavy, delicate, and hard to maneuver, they require special consideration during a move.

How to Ship a Piano

Be sure to confirm from the movers that the shipping includes a pick-up of your choice and the drop-off of the piano in your home or at the new owner's home. When preparing the piano it should be packed with blankets and, ideally, a sealed container that prevents moisture from intruding.

Piano Shipping Cost

There are numerous variables that can affect the cost of the move such as: the build, era, heaviness, style and distance of shipping. Movers may also price by the hour for the travel time. Be sure to clarify this with your mover if this is an additional cost or is it included in the moving price. Other movers may charge a flat rate for the move and base the rate on the weight of the piano.

Some additional charges could be affected by the location of the piano – if the instrument is going on a ground floor or has to be lifted to the top floor, for instance.





Limited Value Versus Full Value Protection Moving Insurance Options

Moving companies offer the following insurance options listed below.

- **Full Value Protection Moving Service:** This requires movers to pay for a damaged item or replace it. It is the most costly option, but it also gives you the most protection.
- **Limited-Value Coverage Protection:** Insurance based solely on the weight of your items. This is not ideal for lightweight, high-value goods. Say you have a 42-inch TV that weighs approximately 30 pounds. If the movers drop that TV, you're only getting a fraction of the item's true cost.
- **Third-Party Insurance:** This involves you purchasing insurance from a third party insurance company. This option might be costlier but it's your best bet for insuring items for what they are worth.

While your homeowner's insurance policy may cover the damage of items that occur inside your home, it doesn't necessarily cover your personal goods if they're damaged while en route to their destination. Your homeowner's policy may provide certain coverage during a move but we still recommend third party insurance or another form of moving insurance provided above.

Always check with your homeowner's insurance policy before your move and do your homework on other types of insurance provided by moving professionals.



Receiving Help with Loading and Unloading of Personal Effects

Are you looking to save money by moving goods on your own and just hiring loaders and unloaders?? We have you covered with assistance you need below.

HIRING LOADERS AND UNLOADERS

Sometimes you have personal moves that you can pack up and only need assistance with loading or unloading heavy boxes and belongings. You can save some money by hiring loaders and unloaders that will show up at the time and day you request when your belongings are ready to be moved on and off a truck. These URLs can be used to help find these services in your area:

- Hire a Helper
<https://www.hireahelper.com/move-help/unloading-help/>
- MovingLabor.com
<https://www.movinglabor.com/moving-services/moving-labor/unload-help>
- MoveAmerica.com
<https://www.moveamerica.com/helpers.php>
- Penske Supplies and Labor
<https://www.pensketruckrental.com/supplies-and-services/moving-labor/>
- College Hunks Hauling Junk
<https://www.collegehunkshaulingjunk.com/labor/truck-loading-unloading/>
- Two Men and a Truck Loading and Unloading
<https://twomenandatruck.com/loading-and-unloading-labor-services>
- UHaul Moving Help
<https://www.uhaul.com/MovingHelp/>



What You Need to Know about Bill of Ladings (BOL) and Proof of Delivery (POL) Papers

Two documents that you will always be asked to sign when your personal goods have been moved are your proof of delivery (POD) and/or Bill of Lading (BOL) documents. Find out more below.

WHAT'S A BILL OF LADING?

The BOL is a legally required form that must be filled out prior to a moving shipment being hauled. This bill serves to guard both the carrier and shipper from liability. These forms are typically issued by the carrier to the shipper and will include comprehensive information on the type of cargo, the number of goods being shipped, and the terminal point for these goods.

A BOL can be created by either the shipper, the carrier, or a third person logistics (3PL) acting on the shipper's behalf. This non-negotiable BOL serves three roles:

- **Receipt for the Cargo:** The BOL is dispensed by the carrier to the shipper, who in return receives a receipt for the cargo. This acts as legal evidence that the shipper has received undamaged goods.
- **Document of Title to the Cargo:** The record of title switches hands and allows for the freight to be handed over to the owner of the BOL.
- **Contract of Carriage Between the Carrier and Shipper:** A BOL is a legally binding contract that evidences an agreement of shipment between the carrier and shipper.

WHAT IS A PROOF OF DELIVERY RECEIPT?

A Proof of Delivery is a signed confirmation that the goods arrived in acceptable condition, post-delivery. The recipient of the cargo must sign this receipt and include the date of delivery.

A copy of this POD letter will be sent to the sender. This will confirm the delivery of the shipment in good order, which can then be pulled up for records or legal filings. This will include details like the time of delivery, delivery address, and the name and signature of the person who received the shipment.

Legally, a POD serves three roles that are nearly identical to the BOL:

- **Cargo Receipt – This form states that the goods have been delivered. It accounts for the types of goods delivered, as well as all the specifications of those goods.**
- **Title to Cargo – States who the intended owner of the cargo is.**
- **Evidence of Contracted Carriage – The POD is the legal contract binding the carrier and consignee.**

Boiled down, a BOL is filled out prior to arrival of your goods, while a POD is confirmed and signed after the shipment has arrived. The signature on a POD confirms two facts:

- **The personal goods have been delivered on time and without visible damage**
- **The cargo is now the responsibility of the consignee, and any damage that occurs after the fact is the fault of the consignee**





WHAT TO DO IF YOU HAVE TO REPORT DAMAGE

If you are the person receiving the shipment, it is essential that you thoroughly inspect the shipment before signing off on the Proof of Delivery. You must confirm that the shipment was intended for you, that the entirety of the shipment arrived, and that it was delivered undamaged. If you sign it and later find damage, you will have difficulty proving that the damage occurred during transport.

All too often, people receiving a shipment will sign the POD without inspecting the package. This can be a major mistake. A POD is not simply a receipt of delivery, but a receipt that the goods have been delivered safely. Any damage claim procedures start with the POD, so if you do not note issues or visible damage, you will be fighting an uphill battle.

TIPS FOR INSPECTING YOUR PERSONAL GOODS AFTER ARRIVAL

When your cargo arrives, be sure to do the following before you even consider signing a Proof of Delivery receipt:

- **Record the Whole Procedure:** Photograph and video evidence of the freight can make or break a liability battle over a damaged claim. Start collecting this information the moment the freight arrives on your lot and while it is being offloaded. To further protect yourself, request the shipper to photograph the goods prior to lading
- **Examine Cargo With the Driver:** The deliverer should walk through this process with you so that they are aware of any issues or damage you note.

- **Thoroughly Inspect the Cargo:** Each piece delivered to you should be wholly examined for visible damage. Carefully review the packaging, the shrink wrapping, the pallets, and the warning tape for any damage. Ensure that packages have not been opened and resealed.
- **Damaged Freight:** If you see visible damage, photograph it and make a detailed note of it on the Proof of Delivery. Even exceptions that look like minor wear and tear should be noted. If there is serious damage to a package or pallet, point it out to the delivery driver. After that, with the driver as a witness, open the package up and see if the items contained within are also damaged. If items are damaged, make further note of this in the POD.
- **Obtain Driver Confirmation:** After you have gone through the entire shipment and made a note of any issues, obtain the driver's signature or initials next to the damaged items' notes.
- **Look for Courier Notification:** If a box is already ticked stating that the package was improperly packed, liability may shift from the carrier to the shipper.

WHO SHOULD SIGN THE PROOF OF DELIVERY?

Ideally, the person signing the POD should be the recipient that is listed on the shipment. However, sometimes the intended addressee is unavailable to physically attend the delivery and signed for the shipment. In this case, the intended recipient can allow someone to receive the cargo and sign on their behalf. In such times, the chosen substitute should be notified of the consequence of signing the POD prior to inspecting the packages.



That said, when someone else does sign on your behalf, it can muddle damaged shipment claims since it is harder to prove that the cargo was damaged during transit rather than after delivery. This is a reason for the chosen substitute to be extra methodical in their review.

What Do I Do with POD Damaged Items?

If you review the cargo and find damage, there are specific steps you should take in order to have the best chance of receiving compensation. These steps include:

- **Take the Cargo:** Even if it is damaged, do not send the driver away with the goods. Instead. Make a note of the damages in the POD and accept the cargo.
- **Document Everything:** It is vital that you document the entire process, especially once you notice damage to the cargo. Document both the first inspection as well as the post-delivery inspection. Take notes of everything and keep copies of all the critical paperwork including the BOL and POD.
- **Move the Goods Somewhere Safe:** Now that the goods are in your possession, it is your responsibility to prevent any further damage from occurring to those goods, especially because the carrier has the legal right to mitigate losses if they are found to be liable. Put these items somewhere safe and dry; where they will not have to be moved again.
- **File the Claim Right Away:** You have a limited time to file a claim of damage. It is essential that you file right away and include the items damaged, the shipment number, and the estimated cost of damages.
- **Pay the Carrier:** In any legal proceeding, the claim will be voided if you do not fulfill your end of the contract by providing payment. Even if the goods are damaged, pay your bill.





Conclusion

Now that you have the tips and moving resources you need to initiate your personal goods moving plan, it's time to get to work. Whether you are moving across town, from state to state or from coast to coast, you have the resources you need now at your fingertips to get the job done right.

Need help with shipping non-personal goods? [USA Truckload Shipping](#) is here to help you with your freight shipping needs. Contact us today at (866) 353-7178 or get a [free freight quote](#) today.

Truckload SHIPPING



(855) 912-0406

<https://usatruckloadshipping.com/>